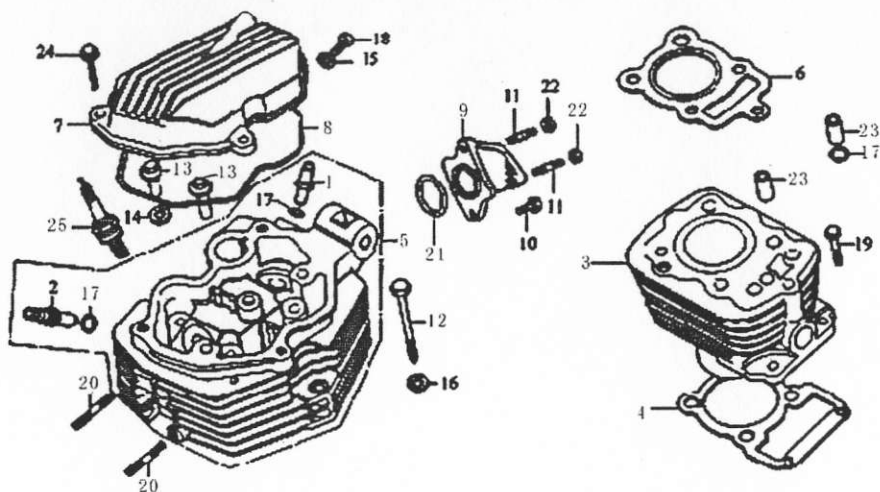
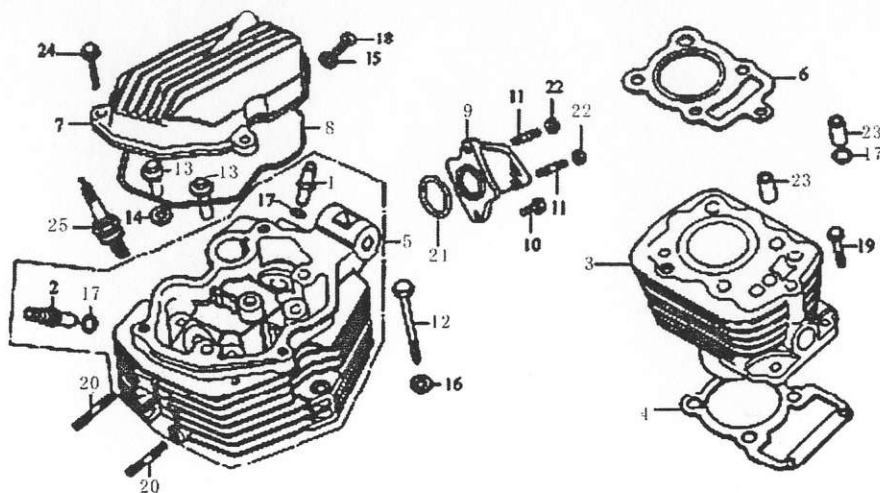


E-1 气缸、气缸头 CYLINDER BLOCK & CYLINDER HEAD



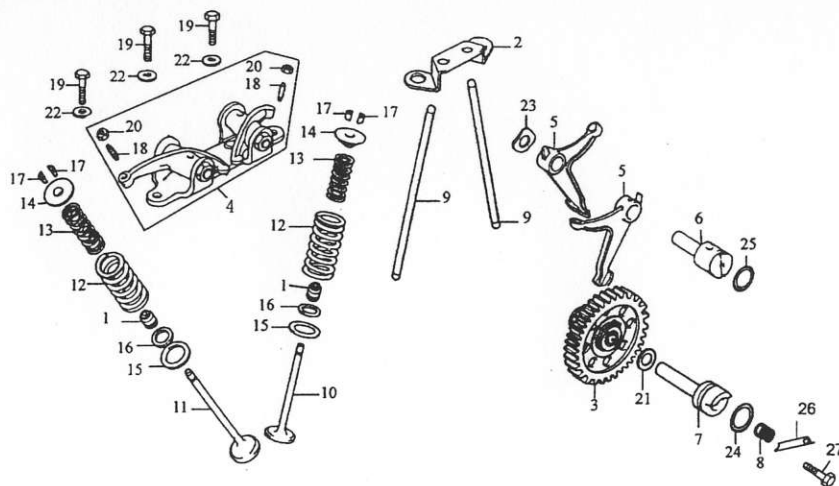
序号 S/N	零部件代号 Part No.	零部件名称	Description	数量 Quantity	备注 Remark
1	12214/156FMI-2	进气门导管	Guide, intake valve	1	
2	12215/156FMI-2	排气门导管	Guide, exhaust valve	1	
3	12110/156FMI-2	气缸体组合	Block, cylinder	1	
4	12121/156FMI-2	气缸体密封垫	Gasket, cylinder block	1	
5	12210/156FMI-2	气缸头组合	Head comp., cylinder	1	
6	12221/156FMI-2	气缸头密封垫	Gasket, cylinder head	1	
7	12311/156FMI-2	气缸头盖	Cover, cylinder head	1	
8	12312/156FMI-2	气缸头盖密封圈	Gasket, cylinder head cover	1	
9	17310/156FMI-2	进气管组合	Duct, inlet	1	
10	GB/ T16674	螺栓 M6×20	Bolt, M6×20	2	
11	GB/T900	螺栓 M6×25	Bolt, M6×25	2	
12	12237/156FMI-2	螺栓 M8×77	Bolt, M8×77	1	
13	12313/156FMI-2	螺母	Nut	4	
14	12345/156FMI-2	垫圈	Washer	2	
15	12315/156FMI-2	油道垫圈 6	Washer, oil passage, 6	1	

E-1 气缸、气缸头 CYLINDER BLOCK & CYLINDER HEAD



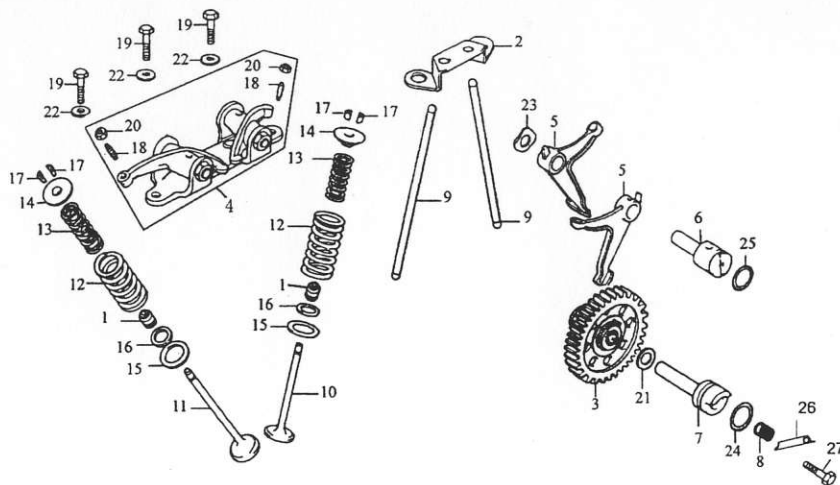
序号 S/N	零 部 件 代 号 Part No.	零 部 件 名 称	Description	数 量 Quantity	备 注 Remark
16	12236/156FMI-2	垫圈	Washer, copper, 8	1	
17	12216/156FMI-2	导管 O 型圈	O-Ring	3	
18	GB/T16674	螺栓 M6×12	Bolt, M6×12	1	
19	GB/T29.2	螺栓 M6×22	Bolt, M6×20	2	
20	GB/T900	螺柱 M6×38	Bolt, M6×35	2	
21	17321/156FMI-2	O 型圈 (33.5×3)	O-Ring, 33.5×3	1	
22	GB/T6170	螺母 M6	Nut, M6	2	
23	12218/156FMI-2	气缸头定位销 (10×20)	Dowel pin, cylinder head, 10×20	2	
24	GB/T5789	螺栓 M6×28	Bolt, M6×28	3	
25	34210/156FMI-2	火花塞 (D7EA NGK) 火花塞 (D8EA NGK)	Plug, spark (D7EA NGK) Plug, spark (D8EA NGK)	1	

E-2 配气机构 VALVE TRAIN



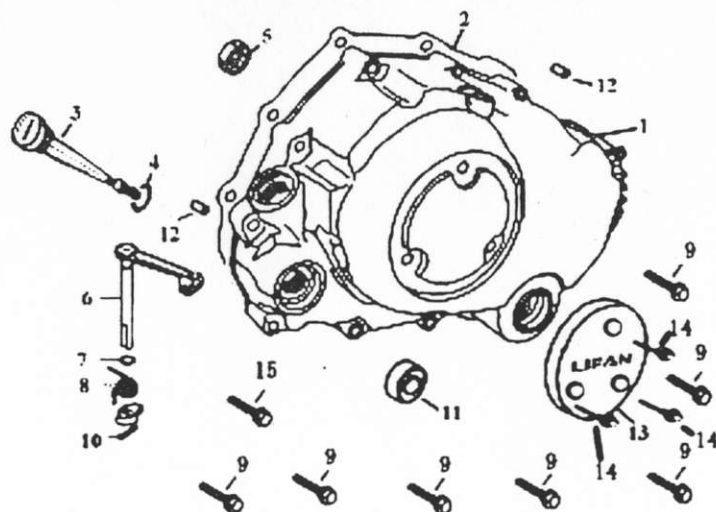
序号 S/N	零部件代号 Part No.	零部件名称	Description	数量 Quantity	备注 Remark
1	14730/156FMI-2	挡油罩	Oil seal, valve stem	2	
2	14261/156FMI-2	推杆导架	Support, push rod	1	
3	14220/156FMI-2	正时从动齿轮组合	Gear set, timing driven	1	
4	14440/156FMI-2	摇臂支座组合	Support, rocker arm	1	
5	14451/156FMI-2	下摇臂	Rocker arm, lower	2	
6	14452/156FMI-2	下摇臂轴	Shaft, rocker arm lower	1	
7	14132/156FMI-2	配气凸轮轴	Shaft, cam	1	
8	14134/156FMI-2	弹簧	Spring	1	
9	14250/156FMI-2	推杆组合	Push rod	1	
10	14710/156FMI-2	进气门	Valve, intake	1	
11	14720/156FMI-2	排气门	Valve, exhaust	1	
12	14755/156FMI-2	气门外弹簧	Spring, valve, outer	2	
13	14756/156FMI-2	气门内弹簧	Spring, valve, inner	2	
14	14751/156FMI-2	气门弹簧上座	Retainer, valve spring	2	
15	14753/156FMI-2	气门外弹簧座	Seat, valve spring	2	

E-2 配气机构 VALVE TRAIN



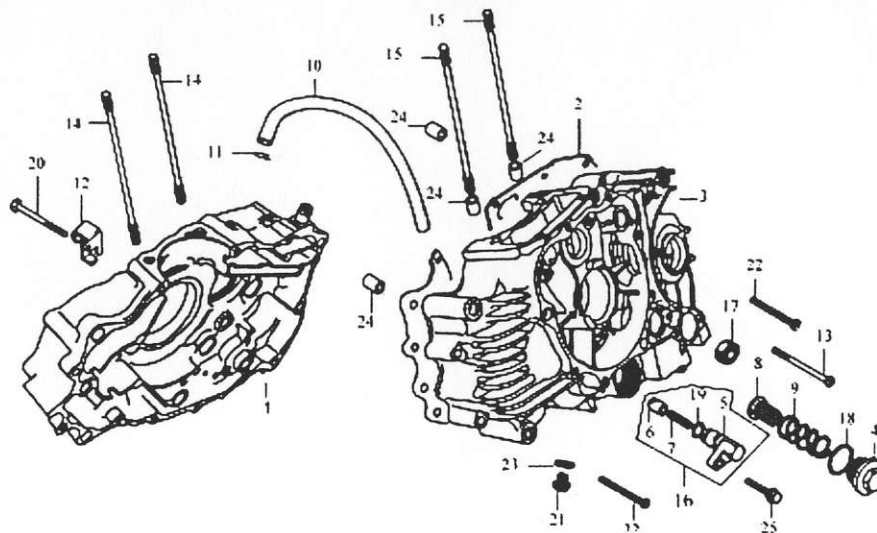
序号 S/N	零部件代号 Part No.	零部件名称	Description	数量 Quantity	备注 Remark
16	14754/156FMI-2	气门内弹簧座	Seat, valve spring inner	2	
17	14752/156FMI-2	气门锁夹	Split cone, valve	4	
18	14415/156FMI-2	气门间隙调节螺钉	Adjusting screw, valve clearance	2	
19	GB/T16674	螺栓 M8×28	Bolt, M8×28	3	
20	14416/156FMI-2	气门间隙调节螺母	Lock nut	2	
21	14135/156FMI-2	垫圈 (φ 14.2×φ 22×1.0)	Washer, (φ 14.2×φ 22×1.0)	1	
22	14425/156FMI-2	垫圈	Washer	3	
23	14454/156FMI-2	波形垫圈	Washer, wave	1	
24	14136/156FMI-2	O型圈 (20×2.5)	O-Ring, 20×2.5	1	
25	14453/156FMI-2	O型圈 (17×2.5)	O-Ring, 17×2.5	1	
26	14137/156FMI-2	配气凸轮轴挡板	Stopper, cam shaft	1	
27	GB/T16674	螺栓 M6×12	Bolt, M6×12	1	

E-3 右曲轴箱盖 RIGHT CRANKCASE COVER



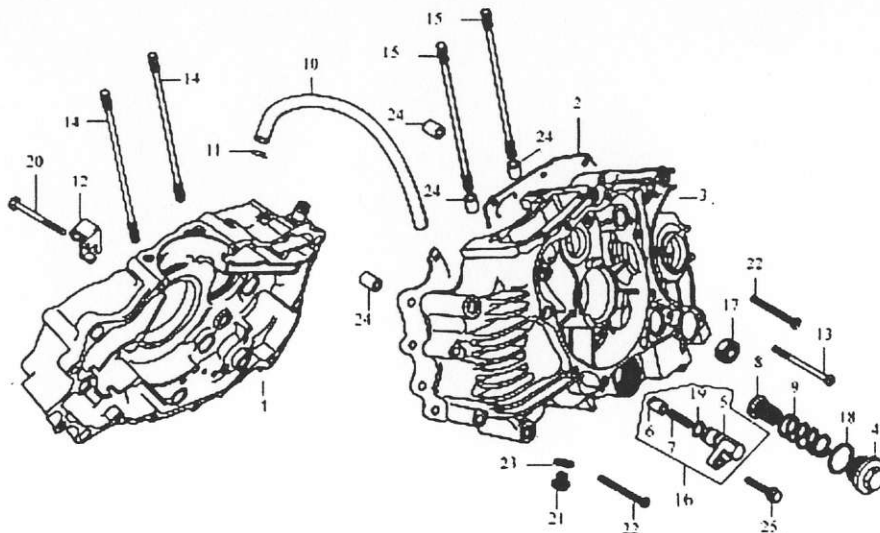
序号 S/N	零 部 件 代 号 Part No.	零 部 件 名 称	Description	数 量 Quantity	备 注 Remark
1	11310/162FMJ-M	右曲轴箱盖组合	Cover, crankcase, RH	1	
2	11310/162FMJ-M	右曲轴箱盖密封垫	Gasket, crankcase cover, RH	1	
3	15611/156FMI-2	机油尺	Dipstick	1	
4	15612/156FMI-2	机油尺 O 型圈 18×3	O-Ring, dipstick, 18×3	1	
5	15620/156FMI-2	机油观察窗	Glass, sight	1	
6	22810/156FMI	离合器操纵杆组合	Lever comp., clutch	1	
7	22823/156FMI-2	O 型圈	O-Ring	1	
8	22821/156FMI	离合器操纵杆弹簧	Spring, clutch lever	1	
9	GB/T16674	螺栓 M6×40	Screw, M6×40	12	
10	22825/156FMI	离合器操纵杆定位销	Split pin, clutch	1	
11	27190/156FMI-2	起动轴油封 (16×28×7)	Oil seal, 16×28×7	1	
12	11318/156FMI-2	定位销 (8×14)	Dowel pin, 8×14	2	
13	11331/162FMJ-M	右小盖	Small lid, RH	1	
14	GB/T16674	螺栓 M6×8	Screw, M6×8	3	
15	GB/T16674	螺栓 M6×50	Screw, M6×50	1	

E - 4 曲轴箱 CRANKCASE



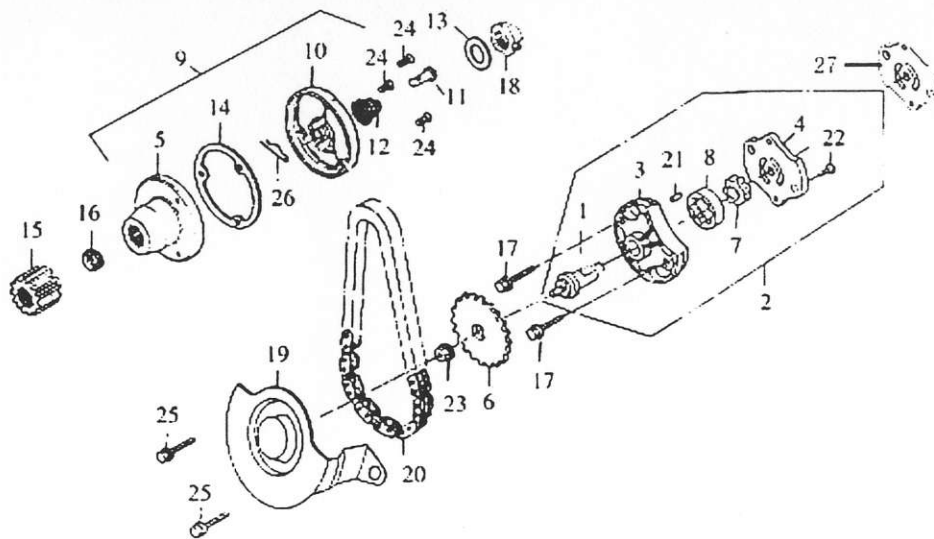
序号 S/N	零部件代号 Part No.	零部件名称	Description	数量 Quantity	备注 Remark
1	11110/162FMJ-M	右曲轴箱组合	Crankcase, RH	1	
2	11119/162FMJ-M	曲轴箱密封垫	Gasket, crankcase	1	
3	11210/162FMJ-M	左曲轴箱组合	Crankcase, LH	1	
4	15463/156FMI-2	机油滤网盖	Cover, gauze filter	1	
5	11231/156FMI-2	压销体	Block, pin-keeping	1	
6	11232/156FMI-2	压销	Pin	1	
7	11233/156FMI-2	压销弹簧	Spring	1	
8	15450/156FMI-2	机油滤网组合	Gauze filter	1	
9	15461/156FMI-2	滤网弹簧	Spring	1	
10	20152/156FMI-2	废气管	Pipe, exhaust	1	
11	20153/156FMI-2	废气管夹	Clip, exhaust pipe	1	
12	22824/156FMI	离合器拉索调节架	Adjusting support, clutch cable	1	
13	GB/ T16674	螺栓 M6×95	Bolt, M6×95	1	
14	12342/156FMI-2	气缸螺栓 A	Stud A	2	
15	12343/156FMI-2	气缸螺栓 B	Stud B	2	

E-4 曲轴箱 CRANKCASE



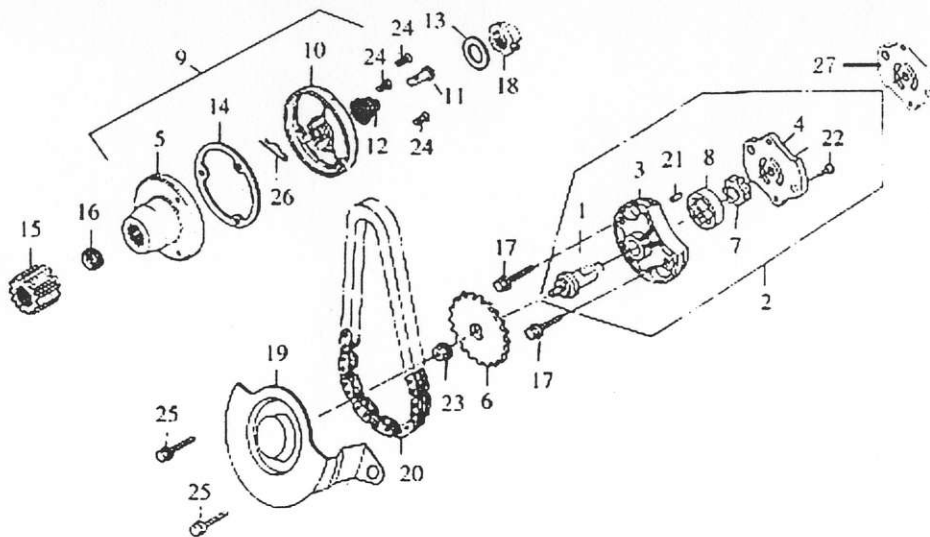
序号 S/N	零 部 件 代 号 Part No.	零 部 件 名 称	Description	数 量 Quantity	备 注 Remark
16	11230/156FMI-2	压销体组合	Body set, pin-keeping	1	
17	24190/156FMI-2	变档轴油封 14×28×7	Oil seal, 14×28×7	1	
18	15462/156FMI-2	机油滤网盖 O 型圈 (35.5×3)	O-ring, 35.5×3	1	
19	11234/156FMI-2	O 型圈 13×2.5	O-ring, 13×2.5	1	
20	GB/ T29.2	螺栓 M6×55	Bolt, M6×55	1	
21	11212/156FMI-2	放油螺塞	Plug, drain	1	
22	GB/ T16674	螺栓 M6×50	Bolt, M6×50	10	
23	11213/156FMI-2	放油螺塞垫圈	Washer, drain plug	1	
24	11118/156FMI-2	定位销 (10×14)	Dowel pin, 10×14	6	
25	GB/T16674	螺栓 M6×25	Bolt, M6×20	1	

E-5 机油泵 机油滤清器 OIL PUMP & OIL FILTER



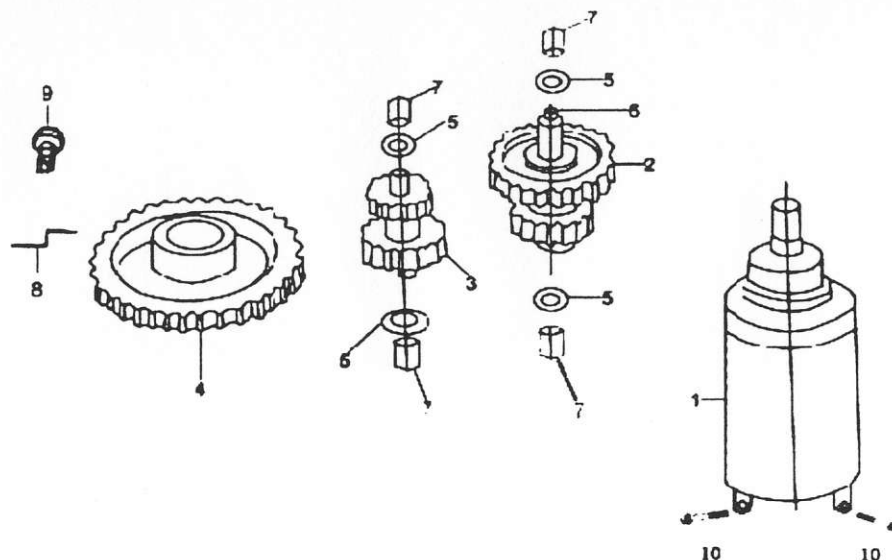
序号 S/N	零部件代号 Part No.	零部件名称	Description	数量 Quantity	备注 Remark
1	15116/162FMJ-M	机油泵轴	Shaft, oil pump	1	
2	15100/162FMJ-M	机油泵总成	Oil pump Assy	1	
3	15111/162FMJ-M	机油泵体	Body, oil pump	1	
4	15112/162FMJ-M	机油泵盖	Cover, oil pump	1	
5	15420/162FMJ-M	机油滤清器转子组合	Oil filter body	1	
6	15121/1P52QMI	机油泵从动链轮	Sprocket, oil pump driven	1	
7	15114/162FMJ-M	机油泵内转子	Rotator, inner	1	
8	15115/162FMJ-M	机油泵外转子	Rotator, outer	1	
9	15410/162FMJ-M	机油滤清器总成	Filter Assy	1	
10	15414/156FMI-2	机油滤清器盖	Cover, oil filter	1	
11	15431/156FMI-2	曲轴通油管	Oil Pipe	1	
12	15432/156FMI-2	通油管弹簧	Spring	1	
13	22632/156FMI-2	止退垫圈	Thrust washer	1	
14	15415/156FMI-2	机油滤清器盖密封垫	Gasket, filter cover	1	
15	22621/162FMJ-M	初级主动齿轮	Gear, primary drive	1	

E-5 机油泵 机油滤清器 OIL PUMP & OIL FILTER



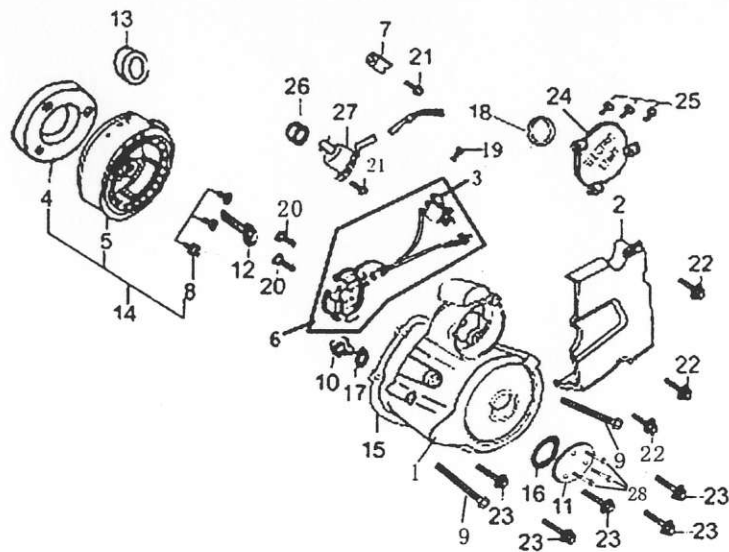
序号 S/N	零部件代号 Part No	零部件名称	Description	数量 Quantity	备注 Remark
16	15211/162FMJ-M	机油泵主动链轮	Sprocket, oil pump drive	1	
17	GB16674	螺钉 M6×35	Bolt, M6×35	2	
18	22631/156FMI-2	初级主动齿轮紧固螺母	Nut	1	
19	15151/162FMJ-M	机油泵传动链条限位板	Limiter, chain, oil pump	1	
20	15140/162FMJ-M	机油泵传动链条	Chain, oil pump	1	
21	15118/1P52QMI	机油泵定位销	Dowel pin, oil pump	1	
22	GB/T818	螺钉 M3×8	Screw, M3×8	2	
23	GB/T6177.1	螺母 M6	Nut, M6	1	
24	GB/T819.1	螺钉 M5×12	Screw, M5×12	3	
25	GB/T16674	螺栓 M6×12	Bolt, M6×12	2	
26	15413/156FMI-2	弹簧卡	Limit pin	1	
27	15131/162FMJ-M	机油泵密封垫	Gasket, oil pump	1	

E-6 起动电机 STARTING MOTOR



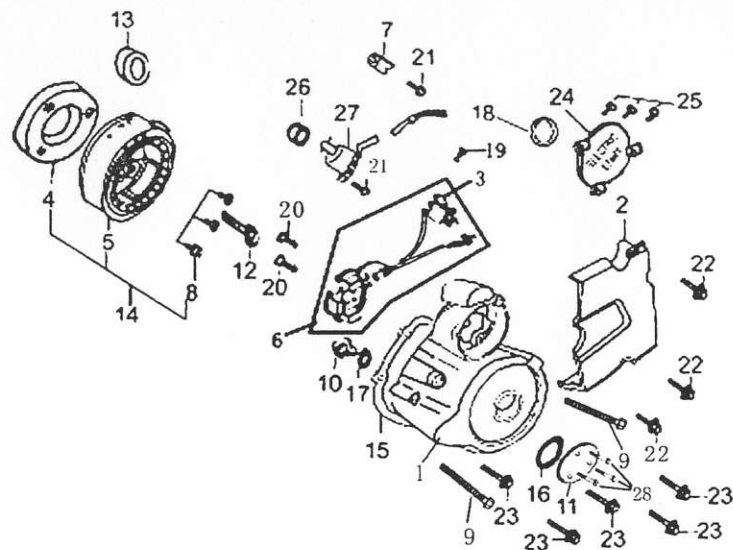
序号 S/N	零 部 件 代 号 Part No.	零 部 件 名 称	Description	数 量 Quantity	备 注 Remark
1	34700/156FMI-2	起动电机	Starting motor	1	
2	28310/156FMI-2	双联齿轮 (一) 组合	Dual-gear set (I)	1	
3	28331/156FMI-2	双联齿轮 (二)	Dual-gear (II)	1	
4	28150/156FMI-2	起动离合器齿轮组合	Gear set, starting clutch	1	
5	28312/156FMI-2	垫圈	Washer	4	
6	28320/156FMI-2	双联齿轮轴 (一) 组合	Shaft, dual-gear	1	
7	GB/T290	滚针轴承 HK101410	Needle bearing, HK101410	4	
8	28175/156FMI-2	起动离合器齿轮挡板	Stopper, starting clutch gear	1	
9	GB/T16674	螺栓 M6×12	Bolt, M6×12	1	
10	GB/T5789	螺栓 M6×30	Bolt, M6×30	2	

E-7 磁电机 MAGNETO



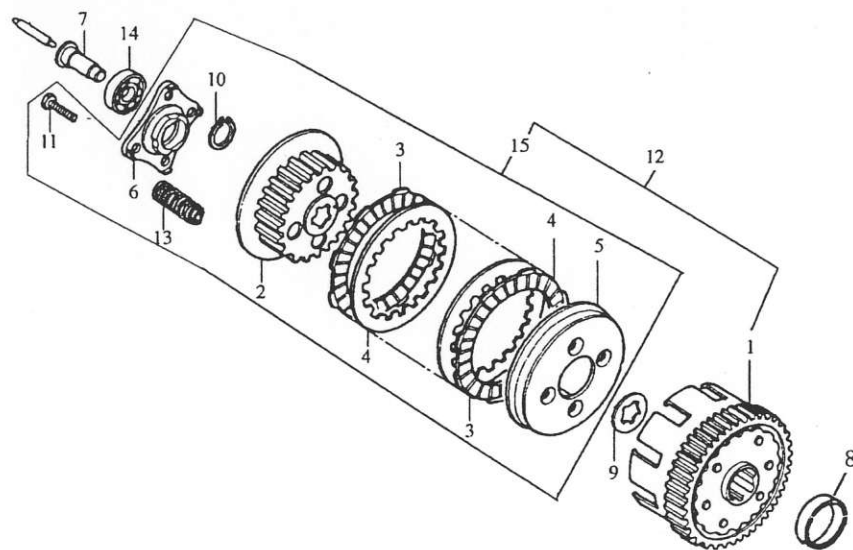
序号 S/N	零部件代号 Part No.	零部件名称	Description	数量 Quantity	备注 Remark
1	11411/156FMI-2S	左曲轴箱盖	Cover, crankcase, LH	1	
2	11451/156FMI-2	左后盖	Rear cover, LH	1	
3	31280/156FMI-2	触发线圈	Coil, induced	1	
4	28110/156FMI-2	起动离合器装配组合	Starting clutch Assy	1	
5	31110/156FMI-2	磁电机转子组合	Rotor set, magneto	1	
6	31210/156FMI-2	磁电机定子组合	Stator set, magneto	1	
7	31928/156FMI-2	磁电机线束挡板	Clamp, wire	1	
8	GB/T70.1	螺钉 M8×18	Screw, M8×18	3	
9	GB/T16674	螺栓 M6×50	Bolt, M6×50	2	
10	11412/156FMI-2	观察孔螺塞	Plug, watch hole	1	
11	11431/156FMI-2S	左小盖	Cover, LH	1	
12	31311/156FMI-2	磁电机紧固螺栓	Lock bolt, magneto	1	
13	13190/156FMI-2	曲轴左油封 (50×34×7)	Oil seal, crankshaft, LH (50×34×7)	1	
14	31102/156FMI-2	转子带起动离合器本体组合	Flywheel clutch Assy	1	
15	11419/156FMI-2	左曲轴箱盖密封垫	Gasket, crankcase cover, LH	1	

E-7 磁电机 MAGNETO



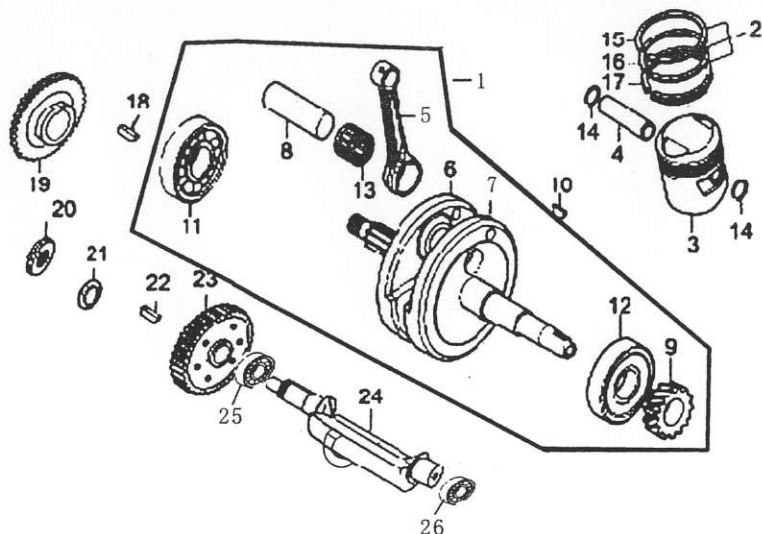
序号 S/N	零部件代号 Part No.	零部件名称	Description	数量 Quantity	备注 Remark
16	11432/156FMI-2	O型圈 27.5×2.5	O-ring, plug, 27.5×2.5	1	
17	11414/156FMI-2	观察孔螺塞 O型圈 13.8×2.5	O-ring, watch hole plug, 13.8×2.5	1	
18	11422/156FMI-2	过轮盖 O型圈 63×3	O-ring, 63×3	1	
19	GB/T16674	螺钉 M5×16	Screw, M5×16	2	
20	GB/T818	螺钉 M5×30	Screw, M5×30	3	
21	GB/T16674	螺栓 M6×12	Bolt, M6×12	2	
22	GB/T16674	螺栓 M6×28	Bolt, M6×28	3	
23	GB/T16674	螺栓 M6×40	Bolt, M6×40	5	
24	11421/156FMI-2	过轮盖	Cover, upper	1	
25	GB/T16674	螺栓 M6×20	Screw, M6×20	3	
26	35740/156FMI-2	档位指示器油封	Oil seal, gear indicator	1	
27	35710/156FMI-2	档位指示器	Indicator, gear	1	
28	GB/T16674	螺钉 M6×14	Screw, M6×14	3	

E-8 离合器 CLUTCH



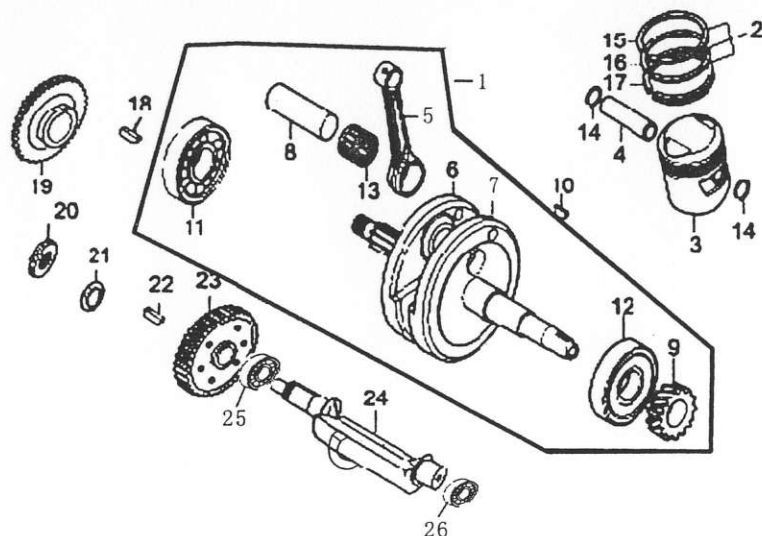
序号 S/N	零部件代号 Part No.	零部件名称	Description	数量 Quantity	备注 Remark
1	22110/156FMI-2	离合器主动盘组合	Outer comp., clutch	1	
2	22320/156FMI-2	离合器从动盘组合	Center comp., clutch	1	
3	22330/156FMI-2	离合器主动片组合 (一)	Disc set, clutch friction, I	5	
4	22341/156FMI-2	从动片	Plate, clutch	4	
5	22351/156FMI-2	离合器压盘	Plate, clutch pressure	1	
6	22361/156FMI-2	离合器端盖	Plate, clutch lifter	1	
7	22861/156FMI	离合器推杆	Rod, clutch lifter	1	
8	22626/162FMJ-M	轴套	Bush		
9	22372/156FMI-2	花键垫圈	Spline washer	1	
10	23672/156FMI-2	弹性挡圈 20	Circlip, 20	1	
11	GB/T5783	螺栓 M6×22	Bolt, M6×22	4	
12	22100/156FMI-2	离合器主体组合	Body, clutch	1	
13	22371/156FMI-2	离合器弹簧	Spring	4	
14	GB/T276	轴承 16003	Bearing, 16003	1	
15	22310/156FMI-2	离合器从动盘装配组合	Clutch Assy	1	

E-9 曲轴、活塞 CRANKSHAFT & PISTON



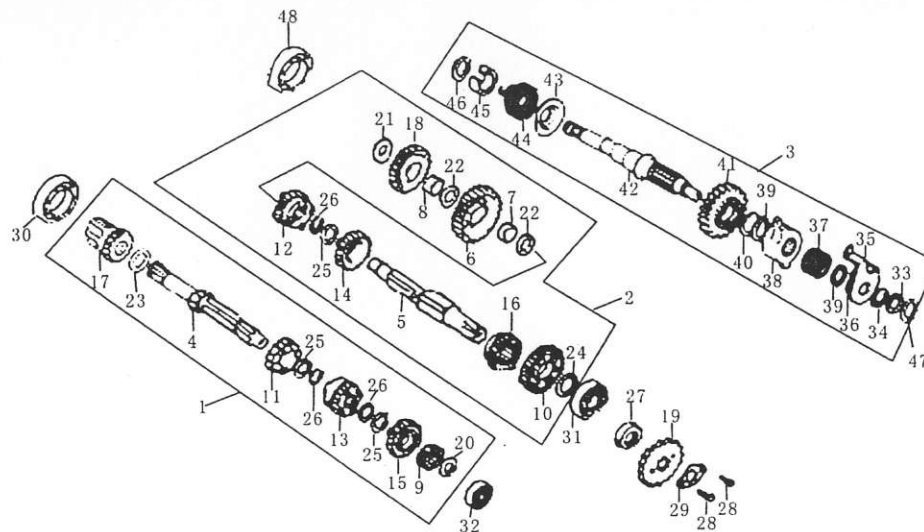
序号 S/N	零部件代号 Part No.	零部件名称	Description	数量 Quantity	备注 Remark
1	13100/162FMJ-M	曲轴连杆组合	Crankshaft & connecting rod	1	
2	13300/156FMI-2	活塞环组	Ring set, piston	1	
3	13211/156FMI-2	活塞	Piston	1	
4	13221/156FMI-2	活塞销	Pin, piston	1	
5	13131/156FMI-2	连杆	Rod, connect	1	
6	13121/162FMJ-M	右曲柄	Crankshaft, RH	1	
7	13111/156FMI-2	左曲柄	Crankshaft, LH	1	
8	13141/156FMI-2	曲柄销	Pin, crankshaft	1	
9	14211/156FMI-2	正时主动齿轮	Gear, timing	1	
10	13118/156FMI-2	半圆键	Key, woodruff	1	
11	13170/156FMI-2	曲轴轴承	Bearing, crankshaft, RH	1	
12	13160/156FMI-2	曲轴左轴承	Bearing, crankshaft, LH	1	
13	13150/156FMI-2	连杆大头轴承	Bearing, roller	1	
14	13222/156FMI-2	活塞销挡圈	Circlip, piston pin	2	
15	13311/156FMI-2	活塞环(一)	Ring (I), piston	1	

E-9 曲轴、活塞 CRANKSHAFT & PISTON



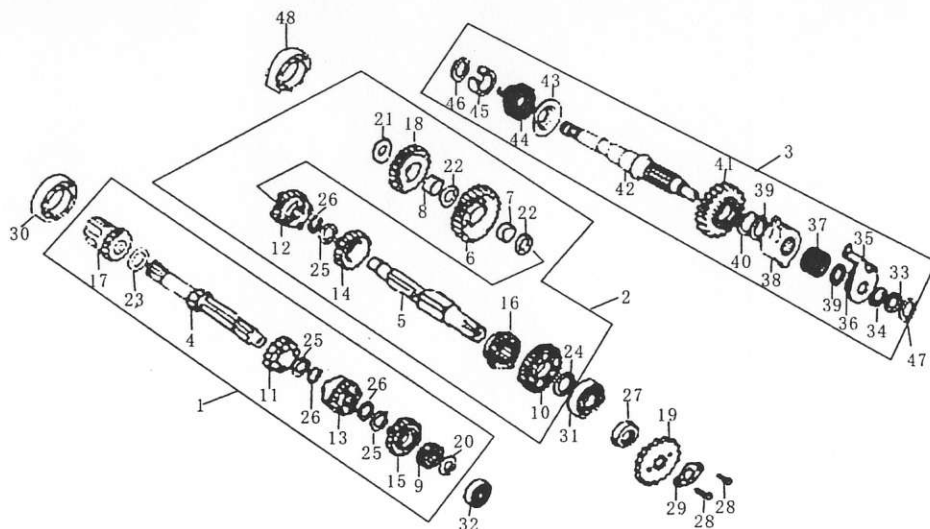
序号 S/N	零部件代号 Part No.	零部件名称	Description	数量 Quantity	备注 Remark
16	13312/156FMI-2	活塞环(二)	Ring (II), piston	1	
17	13320/156FMI-2	油环组合	Oil ring, 3-piece	1	
18	13632/162FMJ-M	键	Key, woodruff	1	
19	13631/162FMJ-M	平衡主动齿轮	Gear, balanced shaft driving	1	
20	13651/162FMJ-M	紧固螺母	Lock nut	1	
21	13652/162FMJ-M	垫圈	Washer	1	
22	13655/162FMJ-M	平键	Key, flat	1	
23	13640/162FMJ-M	平衡从动齿轮组合	Gear, balanced shaft driven	1	
24	13611/162FMJ-M	平衡轴	Shaft, balanced	1	
25	GB/T276	轴承 6303 (17×47×14)	Bearing, 6303 (17×47×14)	1	
26	GB/T276	轴承 6203 (17×40×12)	Bearing, 6203 (17×40×12)	1	

E-10 传动装置 TRANSMISSION



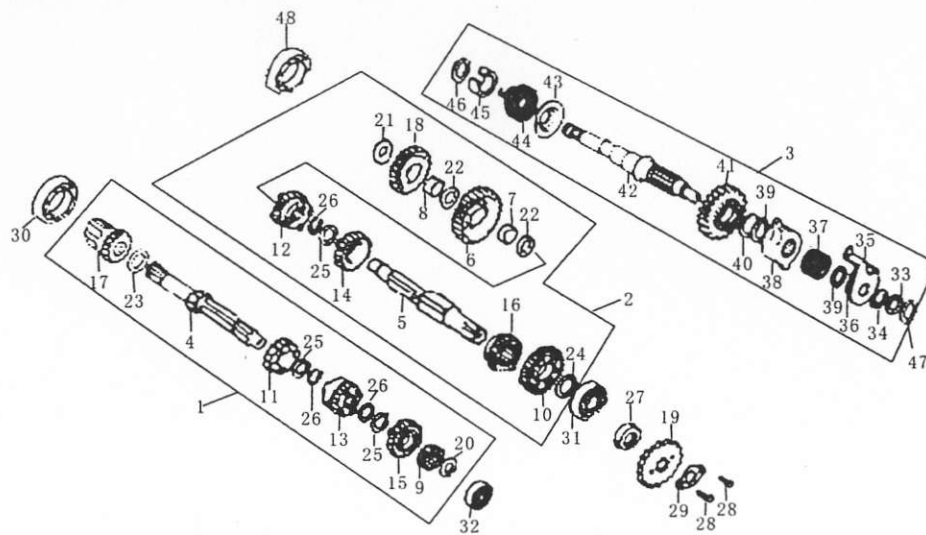
序号 S/N	零部件代号 Part No.	零部件名称	Description	数量 Quantity	备注 Remark
1	23600/162FMJ-M	主轴组合	Main shaft comp.	1	
2	23700/156FMI-2	副轴组合	Countershaft comp.	1	
3	27100/156FMI-2	起动轴总成	Start shaft Assy	1	
4	23611/162FMJ-M	主轴	Main shaft	1	
5	23771/156FMI-2	副轴	Countershaft	1	
6	23711/156FMI-2	副轴一档齿轮	1st gear, countershaft	1	
7	23712/156FMI-2	衬套	Bush	1	
8	27223/156FMI-2	起动过桥齿轮衬套	Bush	1	
9	23621/156FMI-2	主轴二档齿轮	2nd gear, main shaft	1	
10	23721/156FMI-2	副轴二档齿轮	2nd gear, countershaft	1	
11	23631/156FMI-2	主轴三档齿轮	3rd gear, main shaft	1	
12	23731/156FMI-2	副轴三档齿轮	3rd gear, countershaft	1	
13	23641/156FMI-2	主轴四档齿轮	4th gear, main shaft	1	
14	23741/156FMI-2	副轴四档齿轮	4th gear, countershaft	1	
15	23651/156FMI-2	主轴五档齿轮	5th gear, main shaft	1	

E-10 传动装置 TRANSMISSION



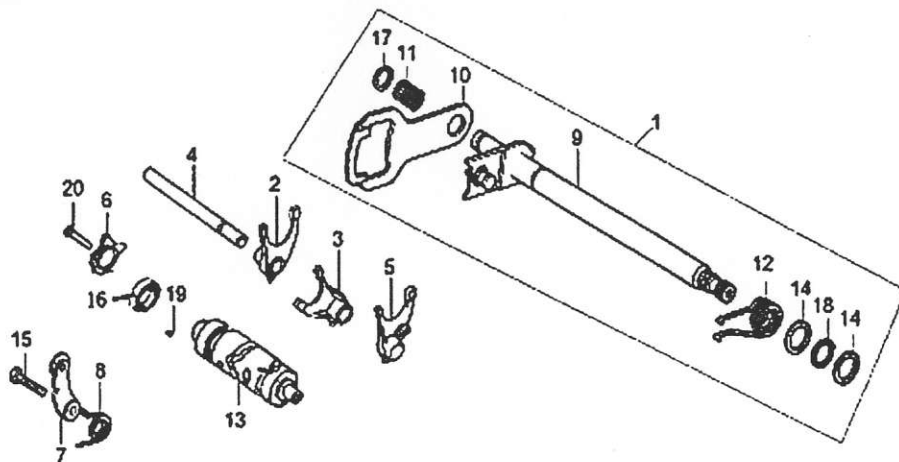
序号 S/N	零部件代号 Part No.	零部件名称	Description	数量 Quantity	备注 Remark
16	23751/156FMI-2	副轴五档齿轮	5th gear, countershaft	1	
17	27230/162FMJ-M	起动从动齿轮组合	Gear set, start drive	1	
18	27221/156FMI-2	起动过桥齿轮	Gear set, start conveying	1	
19	22711/156FMI-2	输出链轮	Sprocket, output	1	
20	23674/156FMI-2	垫圈 (15×25×1.0)	Washer, 15×25×1.0	1	
21	27224/156FMI-2	起动过桥齿轮垫圈 (15×30×1.0)	Washer, 15×30×1.0	1	
22	23773/156FMI-2	垫圈 (16.5×24×0.5)	Washer, 16.5×24×0.5	2	
23	27233/156FMI-2	起动从动齿轮垫圈 (20×26.5×0.5)	Washer, 20×26.5×0.5	1	
24	23774/156FMI-2	垫圈 (20×26×1.0)	Washer, 20×26×1.0	1	
25	23675/156FMI-2	内花键垫圈	Spline washer	3	
26	23672/156FMI-2	弹性挡圈 20	Circlip, 20	3	
27	23790/156FMI-2	副轴油封 20×34×7	Oil seal, 20×34×7	1	
28	GB/T5783	螺栓 M6×10	Bolt, M6×10	2	
29	22712/156FMI-2	链轮固定板	Locating plate, sprocket	1	
30	GB/T276	轴承 6006 (30×55×13)	Bearing, 6006 (30×55×13)	1	

E-10 传动装置 TRANSMISSION



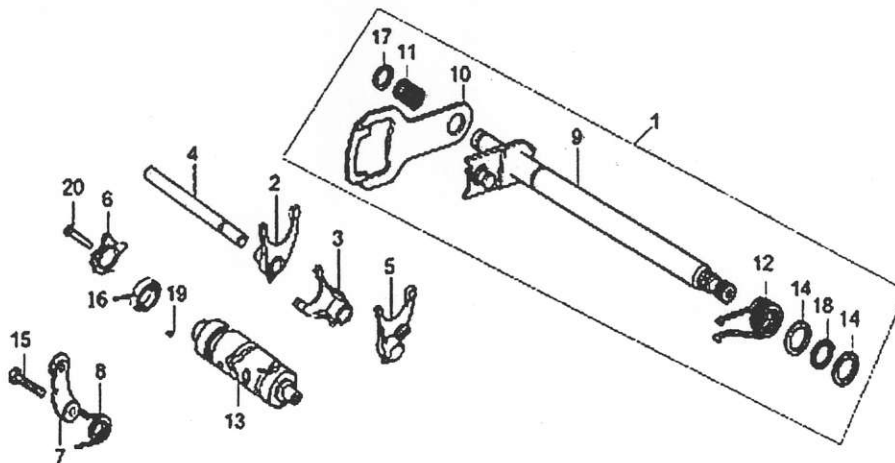
序号 S/N	零部件代号 Part No.	零部件名称	Description	数量 Quantity	备注 Remark
31	GB/T276	轴承 6204 (47×20×14)	Bearing, 6204	1	
32	GB/T276	轴承 6202 RS (15×35×11)	Bearing, 6202 RS	1	
33	GB/T894.1	挡圈 16	Circlip, 16	1	
34	GB/T894.1	挡圈 24	Circlip, 24	1	
35	27155/156FMI-2	摩擦弹簧限位板	Guide, ratchet	1	
36	27133/156FMI-2	限位板	Washer	1	
37	27152/156FMI-2	起动齿轮摩擦弹簧	Spring	1	
38	27113/156FMI-2	起动棘轮	Ratchet, starting	1	
39	27142/156FMI-2	弹性挡圈	Circlip, 20	2	
40	27114/156FMI-2	垫圈 (一)	Washer (I)	1	
41	27151/156FMI-2	起动齿轮	Gear, starting	1	
42	27111/156FMI-2	起动轴	Shaft, starting	1	
43	27117/156FMI-2	弹簧座	Base, spring	1	
44	27118/156FMI-2	起动回位弹簧	Reset spring	1	
45	27119/156FMI-2	轴环	Sleeve	1	

E-11 变档机构 GEARSHIFT DEVICE



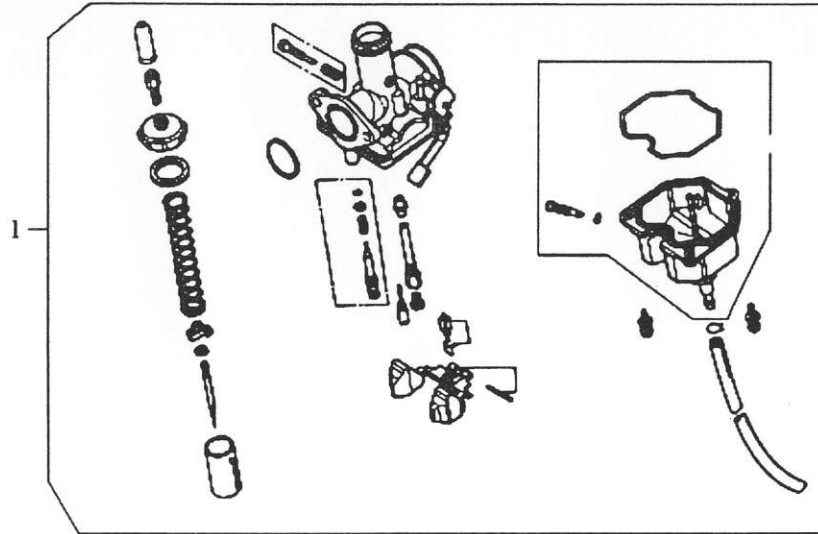
序号 S/N	零部件代号 Part No.	零部件名称	Description	数量 Quantity	备注 Remark
1	24100/156FMI-2	变档轴总成	Gearshift shaft Assy	1	
2	24411/156FMI-2	拨叉 (一)	Fork (I)	1	
3	24412/156FMI-2	拨叉 (二)	Fork (II)	1	
4	24421/156FMI-2	拨叉轴	Shaft, fork	1	
5	24413/156FMI-2	拨叉 (三)	Fork (III)	1	
6	24221/156FMI-2	变档轮	Cam	1	
7	24310/156FMI-2	档位定位板组合	Limit plate	1	
8	24323/156FMI-2	定位板弹簧	Spring	1	
9	24110/156FMI-2	变档轴组合	Gearshift shaft	1	
10	24121/156FMI-2	变档拨板	Shifter	1	
11	24122/156FMI-2	变档拨板弹簧	Spring, shifter	1	
12	24123/156FMI-2	变档轴回位弹簧	Return spring, gearshift shaft	1	
13	24211/156FMI-2	变档凸轮	Drum	1	
14	24124/156FMI-2	垫圈	Washer	2	
15	GB/T5783	螺栓 M6×20	Bolt, M6×20	1	

E-11 变档机构 GEARSHIFT DEVICE



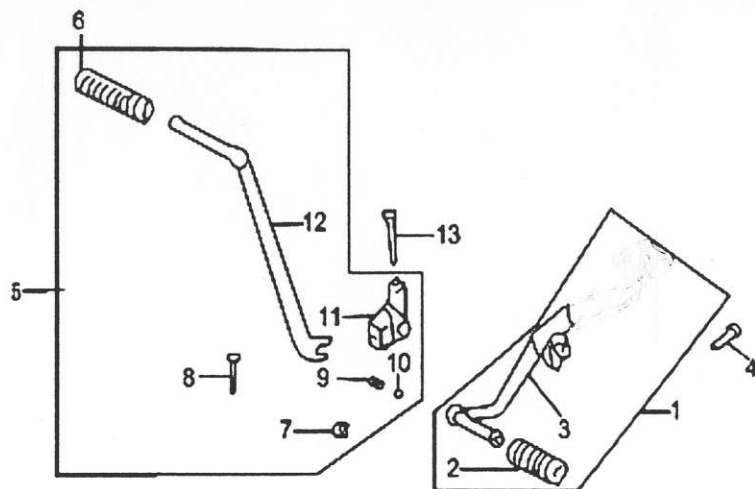
序号 S/N	零 部 件 代 号 Part No.	零 部 件 名 称	Description	数 量 Quantity	备 注 Remark
16	GB/T290	滚针轴承 HKS 212810	Bearing, needle, HKS212810	1	
17	GB/T894.1	弹性挡圈 12	Circlip 12	1	
18	GB/T894.1	弹性挡圈 14	Circlip 14	1	
19	24222/156FMI-2	变档定位销 4×10	Set pin, 4×10	1	
20	GB/T16674	螺栓 M6×25	Bolt, M6×25	1	

E-12 化油器 CARBURETOR



序号 S/N	零部件代号 Part No.	零部件名称	Description	数量 Quantity	备注 Remark
1	16100/156FMI-2	化油器总成	Carburetor Assy	1	

E-13 变档杆、起动杆 GEARSHIFT PEDAL & STARTING ARM



序号 S/N	零部件代号 Part No.	零部件名称	Description	数量 Quantity	备注 Remark
1	24700/156FMI-2	变档杆总成	Gearshift pedal Assy	1	
2	24711/156FMI-2	变档杆胶套	Boot	1	
3	24720/156FMI-2	变档杆焊接组合	Gearshift rod weldment	1	
4	GB/T5783	螺栓 M6×20	Bolt, M6×20	1	
5	27700/156FMI-2	起动杆总成	Starting arm Assy	1	
6	27713/156FMI-2	踏杆胶套	Boot, starting rod	1	
7	GB/T894.1	挡圈 13	Circlip 13	1	
8	27715/156FMI-2	销轴	Bolt pivot	1	
9	27714/156FMI-2	弹簧	Spring	1	
10	GB/T308	钢球 1/4	Ball 1/4	1	
11	27712/156FMI-2	起动踏杆接头	Joint, starting rod	1	
12	27711/156FMI-2	起动踏杆	Rod, starting	1	
13	GB/T5783	螺栓 M8×40	Bolt, M8×40	1	